

# 3. Water Resources

# Washington, NH

**Legend**

- Conservation & Public Lands
- 20 ft. Topographic Contours
- Dams (NHDES)
- Well Head Protection Areas (NHDES)
- Potentially Favorable Gravel Well Area (NHDES)
- Water Bodies
- Special Flood Hazard Area (FEMA)

**Roads**

- Local
- Not Maintained
- Private
- Recreation
- State
- Trails (NHDNCR & local data)

**Shoreland Water Quality Protection Act (NHDES)**

- ≤1,000 ft<sup>3</sup> / day
- ≤2,000 ft<sup>3</sup> / day
- ≤3,000 ft<sup>3</sup> / day

**Streams**

- Intermittent Stream
- Perennial Stream

**DATA SOURCES**

NH GRANIT: Digital data in NH GRANIT represent the efforts of the contributing agencies to record information from the cited source materials. Complex Systems Research Center (CSRC), under contract to the Office of State Planning (OSP), and in consultation with cooperating agencies, maintains a continuing program to identify and correct errors in these data. Neither OSP nor CSRC make any claim as to the validity or reliability or to any implied uses of these data.

Other data sources include NH Department of Environmental Services, the US Department of Agriculture Natural Resource Conservation Service, and the US Geological Survey. Conservation & Public Lands from NH GRANIT were revised by Kane & Ingraham in 2007 (revised 2018).

**THIS MAP**

This map is from a map series produced as part of a natural resource inventory for the Washington, NH Conservation Commission. The inventory gives a comprehensive illustration of Washington's natural, cultural, and historic resources to inform land and resource use decisions. The various resources are described in detail in the accompanying 2007 (revised 2018) document a Natural and Cultural Resource Inventory & Land Conservation Plan, produced by Kane and Ingraham and available from the Washington Conservation Commission. This map was originally created and published by Kane and Ingraham, December, 2007 and updated by Kane Conservation, April, 2018.

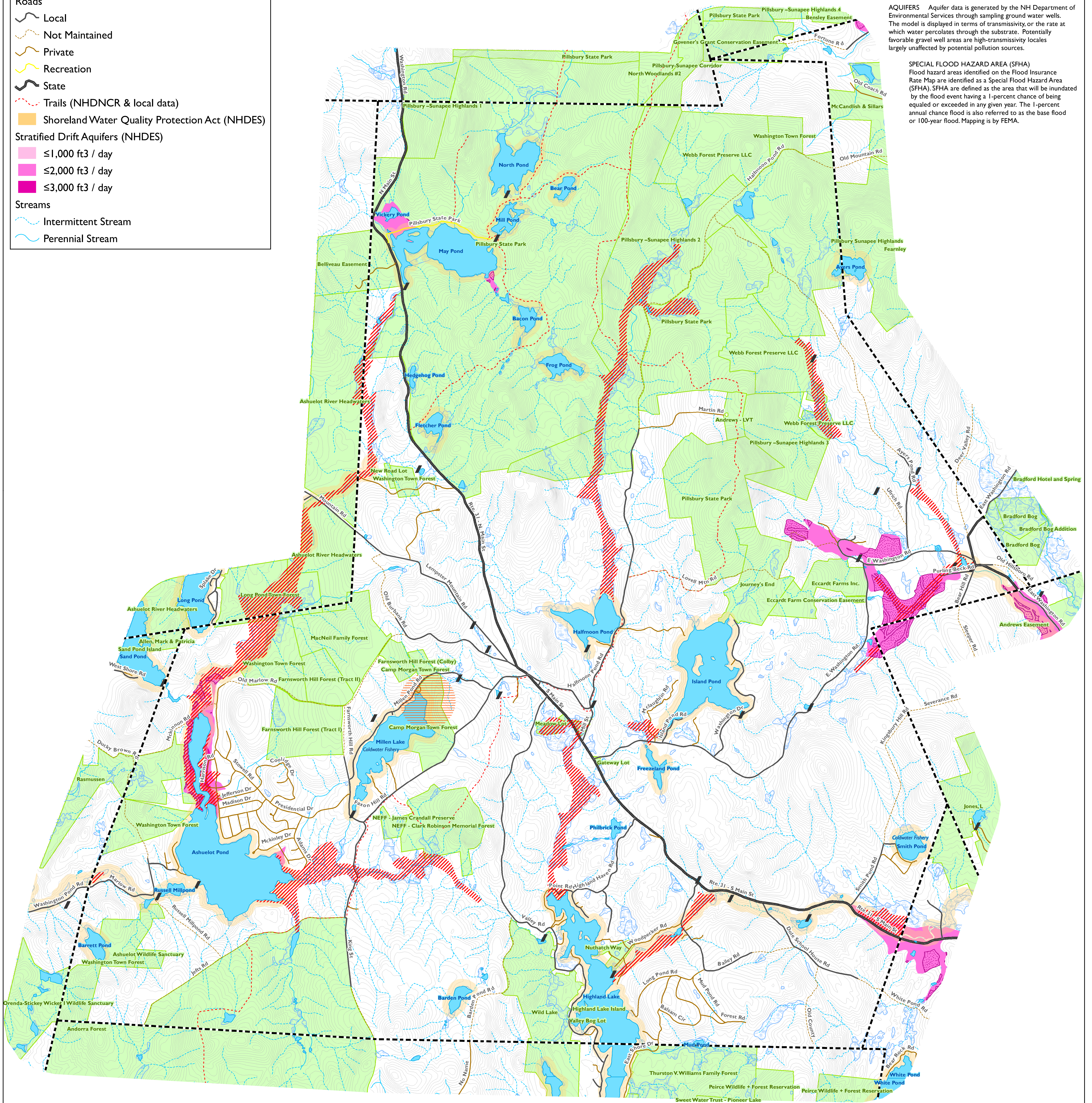
**SHORELAND WATER QUALITY PROTECTION ACT (SWQPA)**

The SWQPA creates buffers which protect public waters through the interception of surface runoff, wastewater, subsurface flow, and groundwater flow, through the minimization of the effects of nutrients, sediment, organic matter, pesticides, and other pollutants, and through the moderation of water temperature. Buffers include lands within 250 feet of lakes or ponds 10 acres or larger and streams or rivers fourth order and above (Public Waters). □

**WELLHEAD PROTECTION AREAS (WHPA)** Wellhead protection areas (WHPA) are designed to prevent the contamination of groundwater used for drinking water. WHPAs are delineated to minimize the possibility of contaminants reaching the well. DES recognizes WHPAs for community water systems and non-transient, non-community water systems (e.g. schools, hospitals, businesses), but not for transient systems (e.g. hotels, restaurants, campgrounds).

**AQUIFERS** Aquifer data is generated by the NH Department of Environmental Services through sampling ground water wells. The model is displayed in terms of transmissivity, or the rate at which water percolates through the substrate. Potentially favorable gravel well areas are high-transmissivity locales largely unaffected by potential pollution sources.

**SPECIAL FLOOD HAZARD AREA (SFHA)** Flood hazard areas identified on the Flood Insurance Rate Map are identified as a Special Flood Hazard Area (SFHA). SFHA are defined as the area that will be inundated by the flood event having a 1-percent chance of being equal or exceeded in any given year. The 1-percent annual chance flood is also referred to as the base flood or 100-year flood. Mapping is by FEMA.



# Washington, NH Natural Resources Inventory 2018 Update

Map Produced by Kane Conservation, 2018

Full Size Print = 33" X 44"

Scale: 1:20,000

